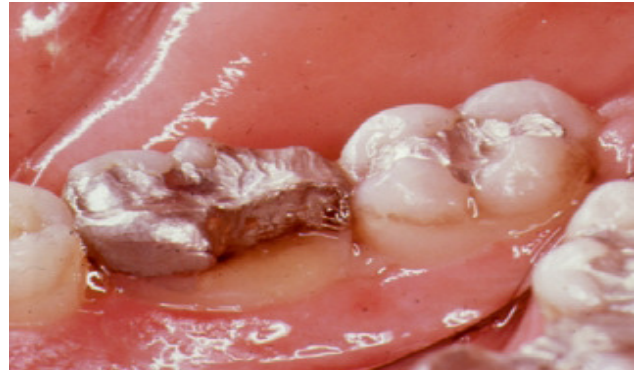


Crown Lengthening

When a tooth is fractured or decay extends below the gum line, this area must be uncovered before it can be restored to properly seal the tooth and protect it.



A crown lengthening procedure, which reshapes the gum and supporting tissues, will resolve the problem.

After treatment, the fractured or decayed area is uncovered and accessible to the doctor for restoration, and the needed space has been established between the supporting tissues and the final position of the restoration.

In order for the gums to heal against the tooth in a healthy manner, there must be 3mm of healthy tooth between the margin of the crest of the bone which supports the tooth. This allows the proper space for attachment of the gum tissues to the tooth.

A tooth which is broken or decayed below the gum is also difficult if not impossible for the doctor to restore properly. The area below the gum must be in a self-cleansing area for you to remove bacterial accumulations. This is why the gum tissues must be repositioned.



This will allow the final restoration to be placed in an acceptable environment.